



Forming Systems, Inc.
P.O. Box 694
Schoolcraft, MI 49087 USA

Phone: 877-727- FORM (3676)
269-679-3557 (International)
Fax: 269-679-3567
Email: info@formingsystemsinc.com

WHITELEGG MACHINES

WIRE FORMING AND WELDING SYSTEMS

CFM Wire Forming and Welding Machine



Series CFM

WHITELEGG MACHINES

WIRE FORMING AND WELDING SYSTEMS

Series CFM

WIRE STRAIGHTENING

- Production directly from coil
- Twin plane roller straighteners
- Optional revolving straightener carriage for quick change over



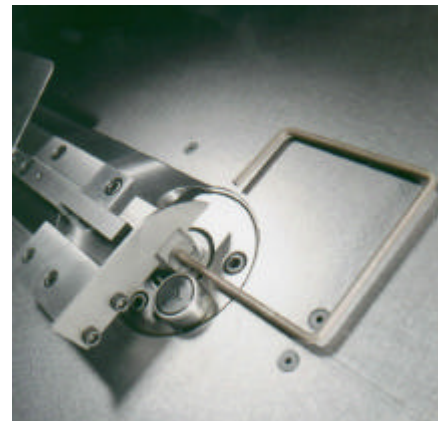
FEED SYSTEM

- Very high precision
- Pneumatic control of feed wheel pressure.
- Incorporates offset facility to counteract wire twist allowing for the production of flat components



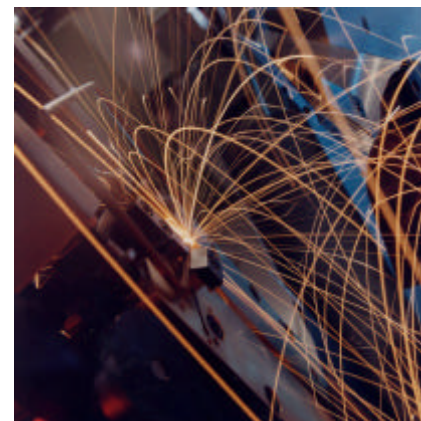
FORMING HEAD

- Standard bend tooling for all wire/strip forming requirements
- No time consuming tooling changes.
- Different bend radii are created at the touch of a button.
- Forward and reverse bending.



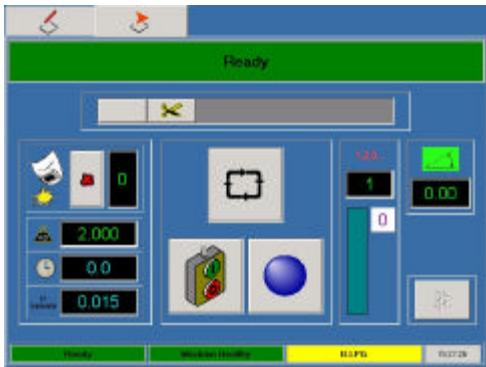
BUTT-WELDING

- Integral automatic butt-welding.
- Pulse welding system gives ultimate control.
- Up to eight weld programs can be stored.
- Burr-free, so no need for secondary finishing operations.



WHITELEGG MACHINES

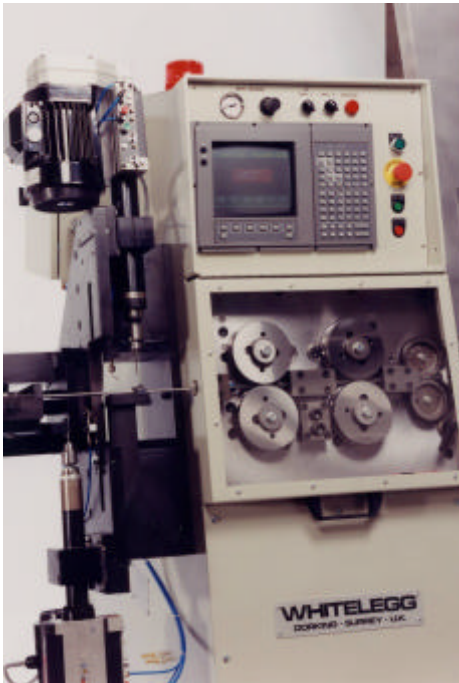
WIRE FORMING AND WELDING SYSTEMS



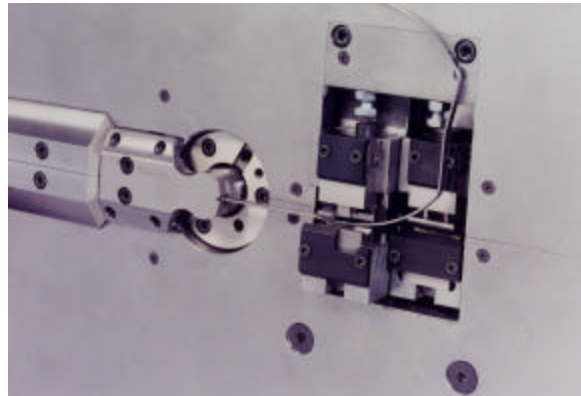
PROGRAMMING

- Industrial PC with Windows® 2000
- Touch Screen.
- Intuitive icon lead programming
- Very simple to use

Special Applications



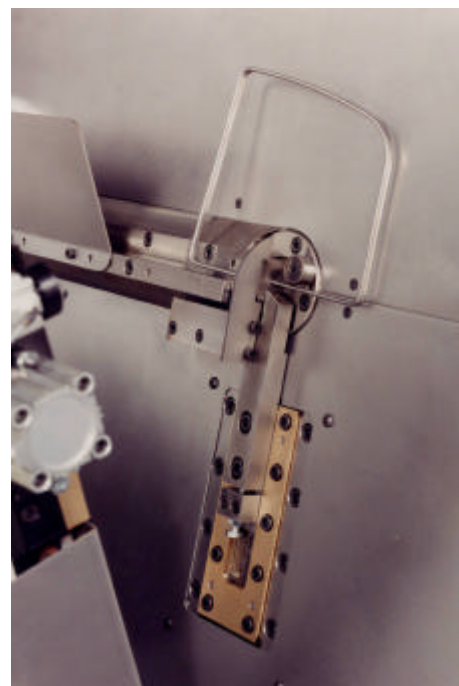
Drilling stations used in processing flat wire



Profiled wire forming with press stations for cropping, punching and coining



Transfer systems for secondary operations reduce handling and add value to your production process



Profiled wire forming for cooker pan supports

Series CFM

WHITELEGG MACHINES

WIRE FORMING AND WELDING SYSTEMS

Series CFM

Machine Type	CFM-400	CFM-600	CFM-800	CFM-1000
Wire Range (mm)	2-4 (.080"- 161")	2-6 (.080"- .250")	3-8 (.120"- .315")	3-10 (.120"- .394")
Bend Angle Accuracy	0.1 deg	0.1 deg	0.1 deg	0.1 deg
Feed Length Accuracy (mm)	+ - 0.1 (.004")	+ - 0.1 (.004")	+ - 0.1 (.004")	+ - 0.1 (.004")
Welding Transformer	15 kva	30 kva	30 kva	50 kva
Production Rings	1200/ h	1200/ h	900/h	900/h
Production Frames	1000/h	1000/h	900/h	900/h
Maximum Frame Dimensions (mm) (Standard)	500 x 500 (20" x 20")	800 x 800 (32" x 32 ")	1000 x 1000 (39" x 39")	1000 x 1000 (39" x 39")
Dimensions (cm)	W 170 D 150 H 200	W 220 D 160 H 200	W 270 D 180 H 240	W 270 D 180 H 240

WHITELEGG MACHINES LTD, HORSHAM ROAD, BEARE GREEN,
DORKING, SURREY, RH5 4LQ UNITED KINGDOM
TEL +44 1306 713200 FAX + 44 1306 711865
WWW.WHITELEGG.COM EMAIL SALES@WHITELEGG.COM