



Forming Systems, Inc.
P.O. Box 694
Schoolcraft, MI 49087 USA

Phone: 877-727- FORM (3676)
269-679-3557 (International)
Fax: 269-679-3567
Email: info@formingsystemsinc.com



CT-2000

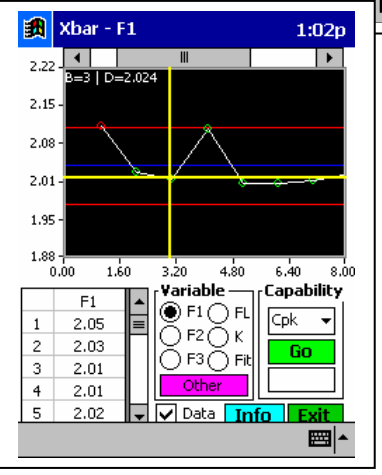
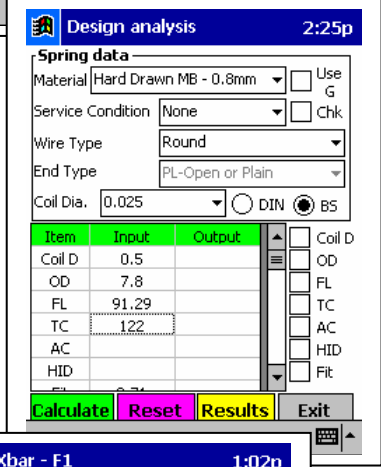
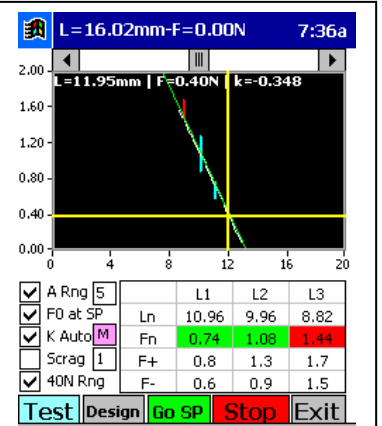
Tension and Compression spring analyzer

- ❑ 0.1- 2000N Servo driven programmable spring tester
- ❑ Pocket PC Controlled - ideal for placement on location at the coiler with PC functionality! (Laptop or PC optional).
- ❑ Unique spring design module integrated with the system test results to enhance coiler setup efficiency and facilitate spring re-engineering, (optional)
- ❑ Excellent R+R performance
- ❑ Optional SPC control charts, capabilities tests and detailed report creation software
- ❑ Programmable for automated testing with spring test setups stored in files for quick recall and test
- ❑ Includes automatic Self Calibration Routines
- ❑ Fully Microsoft Windows 2000, ME and XP compatible.



Specifications

	Compression	Tension
Load	<ul style="list-style-type: none"> 2000N (450lbf), standard load range, resolution – 0.1N (0.022lbf) Optional 400N (90lbf) load range, resolution – 0.015N (0.0034lbf) Continuous digital display or Force/Load height graphical analysis tools and display Accuracy: ±0.4N (to 2000N) and ±0.06N (to 400N) Safe overload to 150% of FS (compression and tension overload protection at 100% of FS load) 	
Stroke	400mm (16")	400mm (16")
Fixtures	<ul style="list-style-type: none"> Standard flat Ø80 mm top/bottom compression testing surfaces Optional fixtures for buckling springs 	<ul style="list-style-type: none"> Standard 10mm (0.4") pin fixtures for open or closed loop tension springs Optional additional pins
Displacement	<ul style="list-style-type: none"> Resolution: 0.01mm (0.0004") Accuracy: ±0.02mm (±0.0008") Absolute display of load height above a user defined fixed reference. 	
Free Length	<ul style="list-style-type: none"> 400mm (16") Maximum Automatically determined 	<ul style="list-style-type: none"> Within 400mm (16") Automatically determined
OD	80mm (3.15") Maximum	80mm (3.15") Maximum
Spring rate	<ul style="list-style-type: none"> Automatic or manual determination of spring rate (linear analysis), option for characterization of non-linear rates (e.g. conical springs) 	
Initial tension	NA	Automatic detection of tension spring initial tension.
Display	<ul style="list-style-type: none"> 256-color touch screen display / 17" Monitor with PC option. 	
Computer	<ul style="list-style-type: none"> 133MHz (minimum) SH3 processor with 16Mbyte Flash RAM Serial, USB or infra-red connection to PC for data transfer Pentium Processor PC or Laptop optional. Fully Microsoft Windows 2000, ME and XP compatible 	
Languages	<ul style="list-style-type: none"> English, German, French and Spanish 	
Software Features	<ul style="list-style-type: none"> Programmable for automated testing, Includes frelength, initial tension and spring rate results. Solid Height detection included. Full reporting and printing capability available. On-Line and off-line SPC control charts and Cpk capability testing available. Design and reverse engineering algorithms Smart self calibration routines 	
Units	N, kgf, gf, ozf, lbf – mm, inches	
Test speeds	1.5mm/s – 15mm/s (3.5"/min – 35.5"/min)	
Power	<ul style="list-style-type: none"> 110V~220V AC 6.5A (Maximum) 	
Dimensions	<ul style="list-style-type: none"> 500mmx220mmx800mm (19.7"x 8.7" x 31.5")- LxBxH Weight 37kg (85.8lbs) 	



Full function spring design, analysis and SPC in real-time