

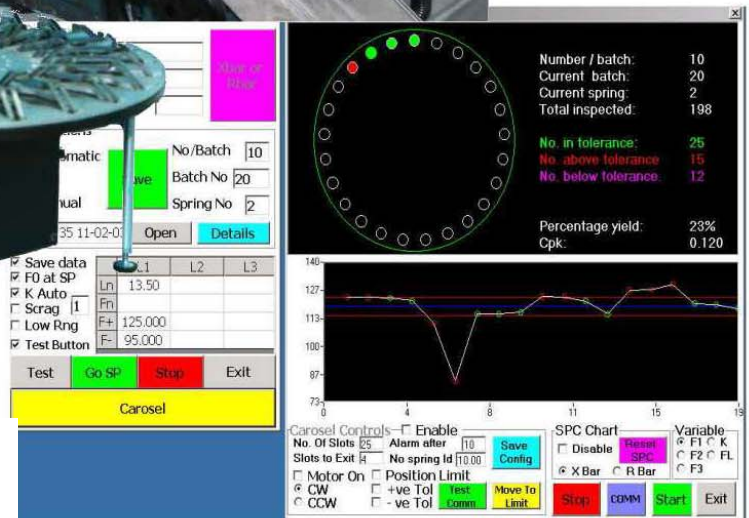
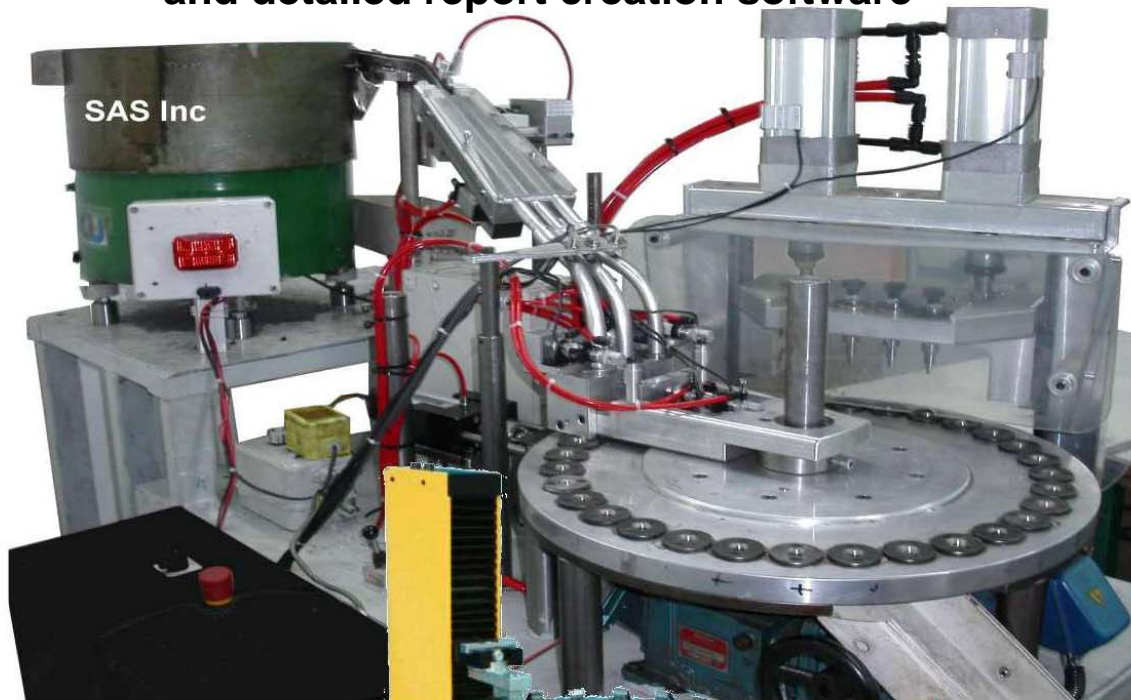


Forming Systems, Inc.
P.O. Box 694
Schoolcraft, MI 49087 USA

Phone: 877-727- FORM (3676)
269-679-3557 (International)
Fax: 269-679-3567
Email: info@formingsystemsinc.com

Automated Spring Loader, Setter, Tester and Sorter

- ❑ Production rates up to 4000 springs per hour
- ❑ PC controlled with production software for flexibility
- ❑ Includes Vibrator bowl, Loading system, Index table, Pneumatic setter, CT series spring tester, and 3 way sorter.
- ❑ Programmable for automated production with process setups stored in files for quick recall and test.
- ❑ Includes on-line SPC control charts, capabilities tests and detailed report creation software



Forming Systems inc.
 877-7273676 Toll Free USA
 269-6793557 International
 www.formingsystemsinc.com



FEATURES

Tester

- CT-10. load- (0.0001N-10N) (0.000022-2.25lbf), Stroke 200 mm (8")
- CT-200. load- (0.01N-200N) (0.0022-45lbf), Stroke 200 mm (8")
- CT-2000. load- (0.1N-2000N) (0.022-450lbf), Stroke 400 mm (16")
- CT5000SP . load- (0.2N-5000N) (0.04-450lbf), Stroke 400 mm (16")

Note: Tester strokes and load capacities can be customized.

Setter

- Single Station includes pre-programmable multiple setting routines
- Double Station includes pre-programmable multiple setting routines
- 0-10000N (0-2200lbf) setting force
- Pneumatic powered

**Carousel / Index
Table**

- Servo Driven
- High Accuracy positioning
- PC controlled
- Interchangeable bushings for different spring geometries

Sorter

- 3 Way Sorting (Above tolerance, Below tolerance, In Tolerance)
- Sorting per load parameters
- Sorting per frelength parameters

Spring Feeder

- Automatic spring feeding and loading system onto the index table.
- PC controlled
- Pneumatic powered
- Includes vibrator bowl
- Single or double spring flow and loading options

Configurations

- Stand alone tester
- Tester, Index table and Three way sorter. (Springs manually loaded onto index table).
- Setter and Index table (Springs manually loaded onto index table).
- Double setter and Index table (Requires automatic spring loading onto the index table).
- Tester, Index table, setter and Three-way sorter. (Springs manually loaded onto index table).
- Automatic feeder and loader with any of the above

Production rates

- Auto feeder, Tester, Setter Index table and Three way sorter. Eg: Spring of tester deflection 12.5 mm (1/2"), setting stroke 25mm (1"), single setter, Setting, testing and sorting rate = 1500 springs per hour.
- Auto feeder, Single setter and Index table. (1500-2000 springs per hour)
- Auto feeder, double setter and Index table. (3000-4000 springs per hour)

Notes: All Production rates depend on the test force tolerances, number of test heights and testing, setting deflections.

Test Parameters

- Frelength
- Spring Constant
- Up to 3 different forces at three test heights.

**Software
Features**

- Programmable for automated production with process setups stored in files for quick recall and test.
- Full reporting and printing capability.
- On-line and off-line SPC control charts and Cpk capability testing
- Programmable for 100% inspection and setting or for any combination of 100% setting and batch testing at preprogrammed intervals.
- Smart self calibration routines